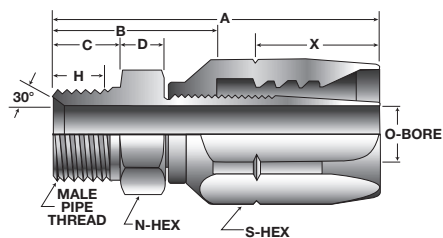




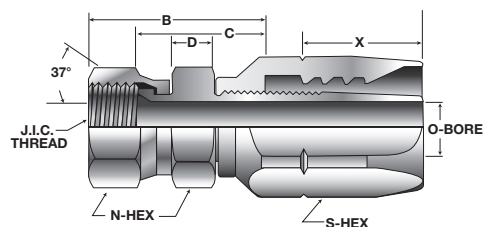
**MP**  
**152 MALE PIPE TYPE**  
 SKIVE/ZINC PLATED STEEL



100R1A PART NO.	HOSE SIZE	O. D. TUBE SIZE	MALE PIPE THREAD	FITTINGS COMP. NIPPLE	PARTS SOCKET	EA. WEIGHT	A	B	C	D	* H	NIPPLE N HEX	O	SOCKET S HEX	X
152-2-4	4	1/4	1/8	4152-2-4	4015-4	0.14	1.97	1.00	0.39	0.23	0.28	9/16	0.19	3/4	0.81
152-4-4	4	1/4	1/4	4152-4-4	4015-4	0.15	2.16	1.19	0.56	0.23	0.38	9/16	0.19	3/4	0.81
152-4-6	6	3/8	1/4	4152-4-6	4015-6	0.23	2.30	1.23	0.56	0.27	0.38	11/16	0.28	7/8	0.88
152-6-6	6	3/8	3/8	4152-6-6	4015-6	0.24	2.31	1.25	0.56	0.27	0.41	11/16	0.28	7/8	0.88
152-6-8	8	1/2	3/8	4152-6-8	4015-8	0.38	2.56	1.33	0.56	0.31	0.41	7/8	0.38	1 1/16	1.03
152-8-8	8	1/2	1/2	4152-8-8	4015-8	0.39	2.75	1.52	0.75	0.34	0.53	7/8	0.38	1 1/16	1.03
152-8-12	12	3/4	1/2	4152-8-12	4015-12	0.62	3.00	1.53	0.75	0.38	0.53	1 1/8	0.56	1 3/8	1.25
152-12-12	12	3/4	3/4	4152-12-12	4015-12	0.63	3.00	1.53	0.75	0.39	0.56	1 1/8	0.63	1 3/8	1.25
152-12-16	16	1	3/4	4152-12-16	4015-16	0.98	3.31	1.63	0.75	0.39	0.56	1 3/8	0.75	1 3/4	1.38
152-16-16	16	1	1	4152-16-16	4015-16	1.04	3.50	1.81	0.94	0.39	0.66	1 3/8	0.88	1 3/4	1.38

For Hose Information See Page 12f  
 \* H Hand Engagement Plus One Full Thread

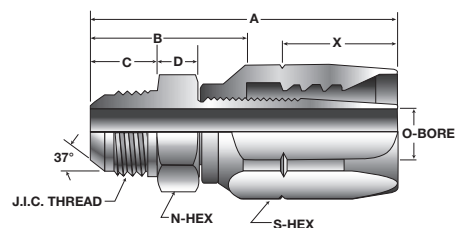
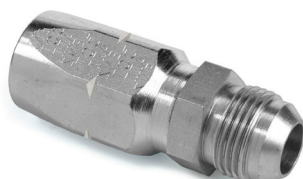
**FJ**  
**151 FEMALE J.I.C. SWIVEL**  
 SKIVE/ZINC PLATED STEEL



100R1A PART NO.	HOSE SIZE	O. D. TUBE SIZE	J.I.C. THREAD	FITTINGS COMP. NIPPLE	PARTS SOCKET	EA. WEIGHT	A	B	C	D	NUT N HEX	O	SOCKET S HEX	X
151-4-4	4	1/4	7/16-20	4151-4-4	4015-4	0.16	2.19	1.22	0.86	0.19	9/16	0.19	3/4	0.81
151-5-4	4	5/16	1/2-20	4151-5-4	4015-4	0.19	2.20	1.23	0.88	0.20	9/16	0.19	3/4	0.81
151-6-4	4	3/8	9/16-18	4151-6-4	4015-4	0.19	2.30	1.33	0.94	0.20	11/16	0.19	3/4	0.81
151-6-6	6	3/8	9/16-18	4151-6-6	4015-6	0.25	2.30	1.39	1.03	0.23	11/16	0.28	7/8	0.88
151-8-6	6	1/2	3/4-16	4151-8-6	4015-6	0.27	2.56	1.50	1.09	0.23	7/8	0.28	7/8	0.88
151-8-8	8	1/2	3/4-16	4151-8-8	4015-8	0.38	2.81	2.14	1.19	0.28	7/8	0.38	1 1/16	1.03
151-10-8	8	5/8	7/8-14	4151-10-8	4015-8	0.42	2.92	1.69	1.23	0.30	1 1/8	0.38	1 1/16	1.03
151-12-12	12	3/4	1 1/16-12	4151-12-12	4015-12	0.74	3.23	1.77	1.17	0.34	1 3/8	0.63	1 3/8	1.25
1512-16-16	16	1	1 5/16-12	4151-16-16	4015-16	1.12	3.66	1.97	1.34	0.34	1 3/8	0.84	1 3/4	1.38

For Hose Information See Page 12f

**MJ**  
**154 MALE J.I.C.**  
 SKIVE/ZINC PLATED STEEL



100R1A PART NO.	HOSE SIZE	O. D. TUBE SIZE	JIC MALE THREAD	FITTINGS COMP. NIPPLE	PARTS SOCKET	EA. WEIGHT	A	B	C	D	NIPPLE N HEX	O	SOCKET S HEX	X
154-4-4	4	1/4"	7/16"-20	4154-4-4	4015-4	0.15	2.14	1.17	0.56	0.23	9/16	0.17	3/4	0.81
154-5-4	4	5/16	1/2"-20	4154-5-4	4015-4	0.15	0.45	1.17	0.56	0.23	9/16	0.19	3/4	0.81
154-6-4	4	3/8"	9/16"-18	4154-6-4	4015-4	0.15	2.16	1.19	0.56	0.25	9/16	0.19	3/4	0.81
154-6-6	6	3/8	9/16"-18	4154-6-6	4015-6	0.21	2.30	1.23	0.56	0.27	11/16	0.28	7/8	0.88
154-8-6	6	1/2	3/4"-16	4154-8-6	4015-6	0.24	2.42	1.36	0.66	0.88	7/8	0.28	7/8	0.88
154-8-8	8	1/2	3/4"-16	4154-8-8	4015-8	0.37	2.64	1.41	0.66	0.88	7/8	0.38	1 1/16	1.03
154-10-8	8	5/8	7/8"-14	4154-10-8	4015-8	0.39	2.77	1.53	0.75	0.88	7/8	0.38	1 1/16	1.03
154-12-12	12	3/4	1 1/16"-12	4154-12-12	4015-12	0.63	3.11	1.64	0.86	1.25	1 1/8	0.61	1 3/8	1.25
154-16-16	16	1	1 5/16"-12	4154-16-16	4015-16	1.06	3.45	1.77	0.91	1.38	1 3/8	0.84	1 3/4	1.38

For Hose Information See Page 12f  
 \*H Hand Engagement Plus One Full Thread